



# Modular Accessories and Repair Kits

D

Accessories &amp; Repair Kits

Filter Replacement Element Kits.....	D2	Accessories –	
Filter Replacement Bowl Kits .....	D3	Filter / Regulators.....	D13-D15
Accessories – Filters .....	D4-D5	Accessories – 08 Series .....	D16
Accessories – Regulators .....	D6-D7	Accessories – 18 / 28 Series .....	D17
Regulator Replacement Kits .....	D8	Accessories – 16 / 26 Series .....	D18
Lubricator Replacement Kits .....	D9	Accessories – 90 Series .....	D19
Accessories – Lubricators.....	D10-D11		
Filter / Regulator –			
Replacement Repair Kits .....	D12		

# Filter Replacement Element Kits



Model	Type A 5 Micron	Type B1 1 Micron	Type B 0.5 Micron	Type C 0.01 Micron	Type D Oil Vapor Removing
<b>Particulate Filters</b>					
F01	FRP-95-199	—	—	—	—
F03	PS403	—	—	—	—
F08	FRP-96-729	—	—	—	—
F16	FRP-95-160	—	—	—	—
F18	FRP-96-639	—	—	—	—
F26	FRP-95-115	—	—	—	—
F28	FRP-96-653	—	—	—	—
F30	FRP-95-209	—	—	—	—
F34	FRP-95-209	—	—	—	—
F35	FRP-95-505	—	—	—	—
F36	FRP-95-506	—	—	—	—
F37	FRP-95-507	—	—	—	—
F39	P3NKA00ESE	—	—	—	—
F43	FRP-95-508	—	—	—	—
F50	FRP-95-212	—	—	—	—
F51	FRP-95-213	—	—	—	—
F52	FRP-95-212 (3 kits)	—	—	—	—
F53	FRP-95-213 (3 kits)	—	—	—	—
<b>Coalescing Filters</b>					
M03	—	PS456	—	PS446	PS452
M08	—	—	MSP-96-732	MTP-96-649	MXP-96-222
M16	—	—	MSP-95-988	MTP-95-548	MXP-95-987
M18	—	—	MSP-96-647	MTP-96-646	MXP-96-650
M21	—	—	MSP-96-649	MTP-96-648	MXP-96-651
M26	—	—	MSP-95-989	MTP-95-549	MXP-95-540
M28	—	—	MSP-96-649	MTP-96-648	MXP-96-651
M30	—	—	MSP-95-992	MTP-95-551	MXP-95-532
M31	—	—	MSP-95-993	MTP-95-521	MXP-95-522
M32	—	MSP-95-873	—	MTP-95-559	MXP-95-558
M35	—	MSP-95-502	—	MTP-95-502	MXP-95-502
M36	—	MSP-95-503	—	MTP-95-503	MXP-95-503
M37	—	MSP-95-504	—	MTP-95-504	MXP-95-504
M39	—	—	P3NKA00ES9	P3NKA00ESC	—
M43	—	MSP-95-876	—	MTP-95-562	MXP-95-565
M45	—	MSP-95-500	—	MTP-95-500	MXP-95-500

\* For F12 Series Filters.

D

Accessories & Repair Kits

# Filter Replacement Bowl Kits



Model	Plastic Bowl / Bowl Guard / No Drain	Plastic Bowl / Manual Drain	Plastic Bowl / Bowl Guard / Manual Drain	Metal Bowl / Manual Drain	Metal Bowl / Sight Gauge / Manual Drain	Plastic Bowl / Bowl Guard / Automatic Drain	Metal Bowl / Automatic Drain	Metal Bowl / Sight Gauge / Automatic Drain
<b>Particulate Filter / Coalescing Filter</b>								
F03 / M03	—	PS404	—	PS447B	—	—	PS451B**	—
F08 / M08	—	—	GRP-96-712	GRP-96-714*	—	—	—	—
F18 / M18	GRP-96-638	—	GRP-96-634	—	GRP-96-636	GRP-96-635	—	GRP-96-637
F16 / M16	—	FRP-95-017	FRP-95-014	FRP-95-178	GRP-95-133	FRP-95-015	FRP-95-950	—
F28 / M28	GRP-96-652	—	GRP-96-642	—	GRP-96-644	GRP-96-643	—	GRP-96-645
F26 / M26	—	GRP-95-929	GRP-95-935	GRP-95-930	GRP-96-931	GRP-95-948	GRP-95-960	—
M21	—	MRP-96-415	FRP-95-722	—	—	—	—	—
F39 / M39	—	—	—	—	P3NKA00BSM	—	—	P3NKA00BSA
F30 / M30	—	FRP-96-315	FRP-95-832	FRP-95-593	GRP-95-676	FRP-95-77	GRP-95-970	—
F34	—	—	GRP-95-902	—	—	—	—	—
M31	—	MRP-95-940	MRP-95-938	MRP-95-939	—	MRP-95-941	—	—

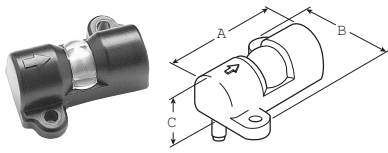
\* Metal bowl does not have sight gauge.  
 \*\* 12 Series has Piston Style Drain.

Model	Bowl O-ring (Nitrile)	Bowl O-ring (Fluorocarbon)	Filter Retainer Element Baffle	Manual Drain
<b>Particulate Filter</b>				
F08	GRP-96-710	GRP-96-711	—	—
F18	GRP-96-640	GRP-96-754	FRP-96-641	GRP-96-685
F28	GRP-96-654	GRP-96-755	FRP-96-283	GRP-96-685
F39	—	—	—	PS512
<b>Coalescing Filter</b>				
M08	GRP-96-710	GRP-96-711	—	—
M18	GRP-96-640	GRP-96-754	—	GRP-96-685
M28	GRP-96-654	GRP-96-755	—	GRP-96-685
M30	—	—	—	PS512

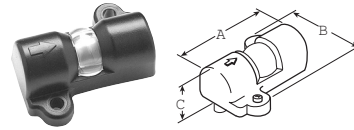
**D**

Accessories & Repair Kits

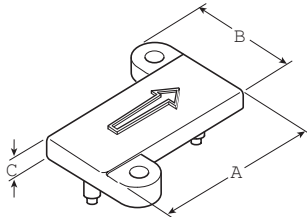
# Accessories – Filters



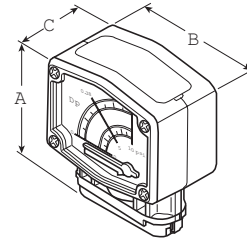
**Differential Pressure Indicator**  
DP2-01-000, DP2-01-001



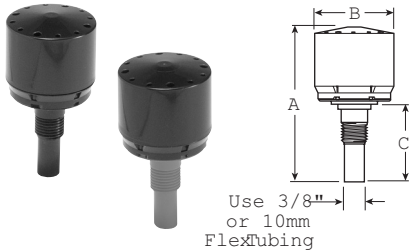
**Differential Pressure Indicator**  
DP8-01-000



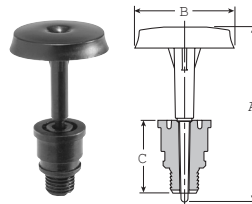
**Cap, Differential Pressure Indicator**  
GRP-95-020, GRP-95-022



**Differential Pressure Gauge**  
DP3-01-000



**Automatic Drain**  
GRP-95-973, GRP-95-981



**Piston Drain**  
GRP-96-716



(Use with GRP-95-981 shown above. Order separately)

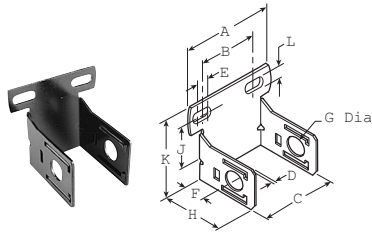
**Manual Override for Auto Float Drains**  
GRP-96-001

## Dimensions

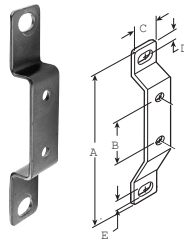
Inches (mm)

Accessories	Part Number	Used On	A	B	C
Differential Pressure Indicator	DP2-01-000	M16, M21, M26, M30, M31, M32	2.12 (54)	1.85 (47)	0.84 (21)
	DP2-01-001	F35, F36, F37, F43, M35, M36, M37, M43, M45			
	DP8-01-000	F18, F28, M18, M28	2.12 (54)	1.85 (47)	.84 (21)
Cap, Differential Pressure Indicator (Pressures over 150 PSIG, 10.3 bar)	GRP-95-020	M16, M21, M26, M30, M31, M32	2.12 (54)	1.85 (47)	0.25 (6.3)
	GRP-95-022	F35, F36, F37, F43, M35, M36, M37, M43, M45			
Differential Pressure Gauge	DP3-01-000	M32, M42	3.0 (75.9)	2.55 (65)	1.54 (39)
Automatic Drains, Nitrile	GRP-95-973	F18, M18, B18 F28, M28, B28 F16, F26, F30, F35, F36, F43	2.93 (74.4)	1.47 (37.3)	1.17 (29.7)
Automatic Drains, Fluorocarbon	GRP-95-981				
Manual Override for Auto Float Drains	GRP-96-001	GRP-95-981	—	—	—
Piston Drain	GRP-96-716	F08, M08, B08	1.70 (43)	.94 (24)	.68 (17)

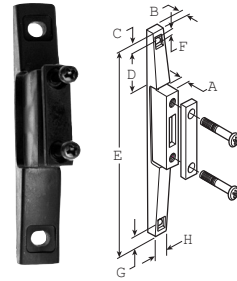
# Accessories – Filters



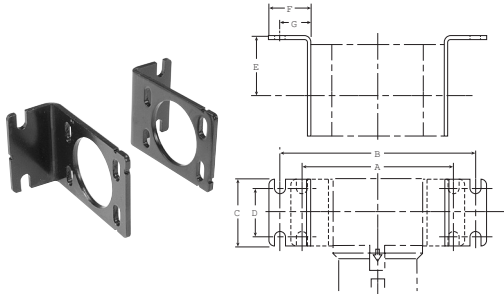
**C-Bracket**  
GPA-97-010



**T-Bracket**  
GPA-96-602

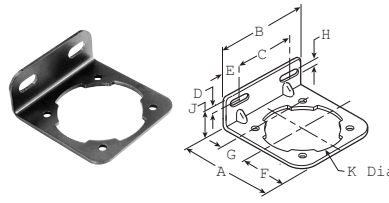


**T-Bracket**  
GPA-96-737  
w/ Joiner

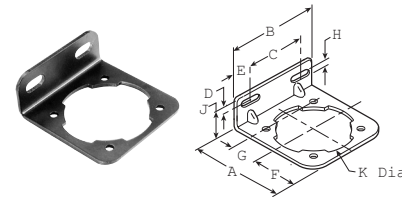


**L-Bracket**  
P3NKA00MW

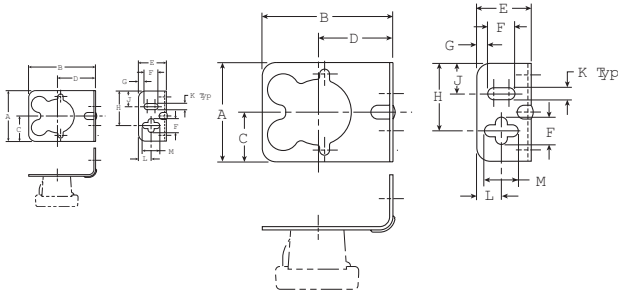
For 1-1/2" BSPP Port Block with E02 fitting application, use Mounting Bracket Kit P3NKA0BMW



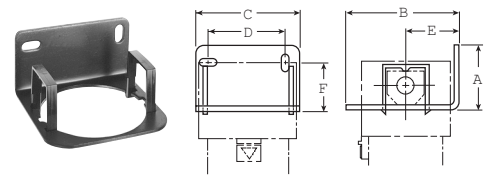
**L-Bracket**  
GPA-96-604



**L-Bracket**  
GPA-96-605



**L-Bracket**  
PS417B



**L-Bracket**  
GPA-95-016, GPA-95-946

## Dimensions Inches (mm)

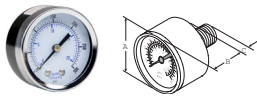
Accessories	Part Number	Used On	A	B	C	D	E	F	G	H	J	K	L	M
<b>C-Bracket</b>	<b>GPA-97-010</b>	F08, M08, B08	2.67 (68)	1.73 (44)	1.57 (40)	.07 (1.8)	.39 (9.9)	1.57 (40)	.78 (20)	2.32 (59)	1.37 (35)	2.41 (61)	.26 (6.6)	—
<b>L-Bracket</b>	<b>GPA-95-016</b>	F16, M16	2.12 (53)	3.62 (91)	3.40 (83)	2.53 (64)	1.88 (47)	1.60 (41)	—	—	—	—	—	—
	<b>GPA-95-946</b>	F26, M26	2.12 (53)	3.62 (91)	3.80 (96)	2.93 (74)	1.88 (47)	1.60 (41)	—	—	—	—	—	—
	<b>GPA-96-604</b>	F18, M18, B18	2.84 (72)	2.74 (69.5)	1.66 (42)	.38 (9.6)	.54 (14)	1.26 (32)	.88 (22)	.28 (7.1)	1.10 (28)	2.25 (57)	—	—
	<b>GPA-96-605</b>	F28, M28, B28	3.44 (87)	3.00 (76)	1.88 (48)	.38 (9.6)	.56 (14)	1.49 (38)	1.10 (28)	.28 (7.1)	1.10 (28)	2.66 (67.5)	—	—
	<b>P3NKA00MW</b>	F39, B39	6.22 (158)	8.19 (208)	2.75 (70)	1.97 (50)	2.36 (60)	1.77 (45)	1.30 (33)	—	—	—	—	—
	<b>PS417B</b>	F03, M03	2.12 (53)	3.62 (91)	3.40 (83)	2.53 (64)	1.88 (47)	0.50 (13)	0.20 (5)	1.24 (31)	0.56 (14)	0.22 (6)	0.45 (11)	0.62 (16)
<b>T-Bracket</b>	<b>GPA-96-602</b>	F18, F28, M18, M28	3.75 (95)	1.25 (32)	.76 (19.3)	.25 (6.3)	.28 (7.1)	—	—	—	—	—	—	—
<b>T-Bracket w/ Joiner</b>	<b>GPA-96-737</b>	F08, M08	.45 (11)	.28 (7.1)	.40 (10)	.67 (17)	3.97 (100.8)	.22 (5.6)	.40 (10)	.64 (16)	—	—	—	—

# Accessories – Regulators

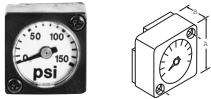
## Dimensions Inches (mm)



Flush Mount Gauge\*



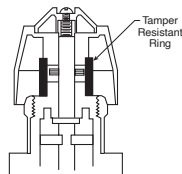
Gauges



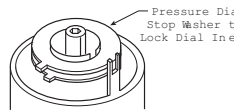
Flush Mount Gauge

Digital Gauge

Accessories		Used On	A	B	C
<b>Flush Mount Series Gauge</b>  *For R08/R09 Regulators with date code after November 2023 (4423 Date Code), please use these part numbers when ordering a replacement gauge.	GRP-96-791-04B (0 to 4 bar)	R08, R09	1.06 (26.9)	.63 (16)	-
	GRP-96-792-11B (0 to 11 bar)				
	GRP-96-792-20B (0 to 20 bar)				
	GRP-96-791-060 (0 to 60 psig)				
	GRP-96-791-160 (0 to 160 psig)				
	GRP-96-791-290 (0 to 290 psig)				
<b>Gauges, 5mm 2" Round 1/4" Center Back Mount</b>	K4520N14030 (0 to 30 PSIG)	R18, R28	1.97 (50)	0.94 +(24)	0.71 (18)
	K4520N14060 (0 to 60 PSIG)				
	K4520N14160 (0 to 160 PSIG)				
	K4520N14300 (0 to 300 PSIG)				
<b>Gauges, 1/8 Port, CBM</b>	K4515N18060 (0 to 60 PSIG)	R08	1.64 (41.6)	1.09 (27.6)	.80 (20)
	K4515N18160 (0 to 160 PSIG)				
<b>Flush Mount Series Gauges</b>	K4511SCR060 (0 to 60 PSIG)	R08	1.06 (26.9)	.63 (16)	—
	K4511SCR160 (0 to 160 PSIG)	R08			
	K4511SCR11B (0 to 11 bar)	R08			
<b>Round Digital Gauge, 1/4 Port</b>	K4517N14160D (0 to 160 PSIG)	R18, R28	1-3/4" Diameter		
<b>Tamper Resistant Kit</b>	RPA-95-006	R16, R26, P15, P16	—	—	—
	RRP-95-585	R11, R21, R31, R41	—	—	—
<b>Tamperproof Lock and Cover Kit</b>	RPA-96-736B	R08, R09, B08	—	—	—
	RPA-96-737B	R18, B18	—	—	—



RPA-95-006



RRP-95-585



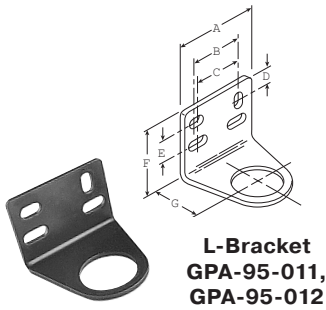
Tamperproof Lock and Cover Kit

Tamper Resistant Kit

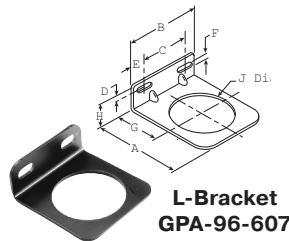
D

Accessories & Repair Kits

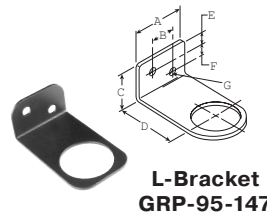
# Accessories – Regulators



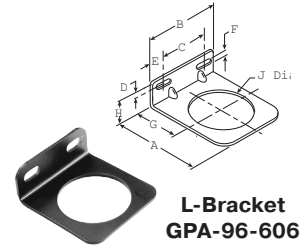
**L-Bracket  
GPA-95-011,  
GPA-95-012**



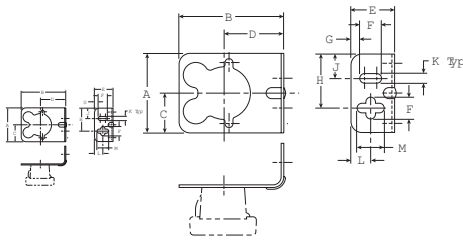
**L-Bracket  
GPA-96-607**



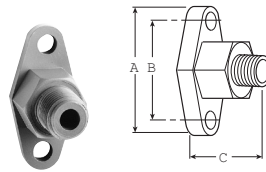
**L-Bracket  
GRP-95-147**



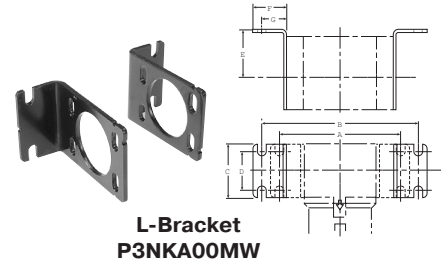
**L-Bracket  
GPA-96-606**



**L-Bracket  
PS417B  
(Includes Panel Mount Nut)**

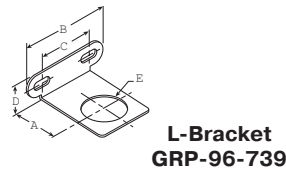


**Wall Mounting Bracket –  
Gauge Port Adapter  
RRP-95-590, 1/4" Pipe Thread  
RRP-95-591, 1/8" Pipe Thread**

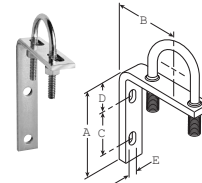


**L-Bracket  
P3NKA00MW**

For 1-1/2" BSPP Port Block with E02 fitting application,  
use **Mounting Bracket Kit P3NKA08MW**



**L-Bracket  
GRP-96-739**



**Wall Mounting Bracket  
U-Bolt Pipe Clamp  
GRP-95-734**

## Dimensions

Inches (mm)

Accessories		Used On	A	B	C	D	E	F	G	H	J	K	L	M
<b>L-Bracket with Plastic Panel Nut</b>	<b>GPA-95-011</b>	R16, P15, P16	2.50 (63.5)	1.60 (41)	1.50 (38)	0.46 (12)	0.62 (16)	1.88 (48)	1.62 (41)	—	—	—	—	—
	<b>GRP-95-747</b>	RB3, RA3	1.50 (38)	0.68 (17)	1.00 (25)	1.75 (44)	0.34 (8.6)	0.31 (7.9)	0.22 (5.6)	—	—	—	—	—
<b>L-Bracket</b>	<b>GPA-95-012</b>	R16, P15, P16	2.50 (63.5)	1.60 (41)	1.50 (38)	0.46 (12)	0.62 (16)	1.88 (48)	1.62 (41)	—	—	—	—	—
	<b>GRP-95-147</b>	RB3, RA3	1.50 (38)	0.68 (17)	1.00 (25)	1.75 (44)	0.34 (8.6)	0.31 (7.9)	0.22 (5.6)	—	—	—	—	—
	<b>GPA-95-956</b>	R26	3.00 (76.2)	2.06 (50.8)	—	0.55 (14.0)	3.50 (88.9)	4.05 (102.9)	1.88 (47.8)	—	—	—	—	—
	<b>GRP-96-739</b>	R08, R09	1.57 (40)	2.68 (68)	1.74 (44)	.97 (25)	1.19 (30)	—	—	—	—	—	—	—
	<b>GPA-96-606</b>	R18, R19	2.74 (69.5)	2.74 (69.5)	1.66 (42)	.43 (11)	.54 (14)	.28 (7.1)	1.57 (40)	1.00 (25)	2.0 (51)	—	—	—
	<b>GPA-96-607</b>	R28	3.33 (84.5)	3.00 (76)	1.88 (48)	.43 (11)	.56 (14)	2.40 (61)	1.94 (49)	1.00 (25)	2.40 (61)	—	—	—
	<b>P3NKA00MW</b>	R39	6.22 (158)	8.19 (208)	2.75 (70)	1.97 (50)	2.36 (60)	1.77 (45)	1.30 (33)	—	—	—	—	—
	<b>PS417B</b>	R03	1.80 (46)	2.37 (60)	0.90 (23)	1.35 (34)	1.00 (25)	0.50 (13)	0.20 (5)	1.24 (31)	0.56 (14)	0.22 (6)	0.45 (11)	0.62 (16)
<b>Wall Mtg. Bracket Gauge Port Adapter</b>	<b>RRP-95-590</b>	P15, P16, R16, R21, R26, R30, R31, R40, R41	1.87 (47.5)	1.38 (35)	1.25 (31.7)	—	—	—	—	—	—	—	—	—
	<b>RRP-95-591</b>	RB3, RA3, R03	1.87 (47.5)	1.38 (35)	1.09 (27.6)	—	—	—	—	—	—	—	—	—
	<b>GRP-95-734</b>	For All Non-Modular Units Up to 1" N	3.34 (85)	2.76 (70)	1.62 (41)	1.10 (28)	0.30 (7.6)	—	—	—	—	—	—	—

# Regulator Replacement Kits

Model	Self-relieving Diaphragm (Nitrile)	Non-relieving Diaphragm (Nitrile)	Valve Assembly Kit	Tamper Resistant Ring	Plastic Panel Nut	Aluminum Panel Nut
R08, R09	—	—	—	—	RPA-96-734	RPA-96-733
R18, R19	—	—	RRP-96-658	—	RRP-96-675B	RRP-96-673
R28	RRP-96-986	RRP-96-987	RRP-96-049	RRP-96-672	RRP-96-676	RRP-96-674
Model	Main Regulating Spring 0-30 PSIG	Main Regulating Spring 0-60 PSIG	Main Regulating Spring 0-125 PSIG	Main Regulating Spring 0-250 PSIG		
R08, R09	GRP-95-111	GRP-96-718	GRP-96-717B	—		
R18, R19	RRP-96-659B	RRP-96-660B	RRP-96-661B	RRP-96-662B		
R28	RRP-96-163	RRP-96-164	RRP-96-165	RRP-96-166		
R39	—	C10A1304	CA101308	CA101317		

Model Regulator	Self-relieving Piston	Non-relieving Piston	Self-relieving Diaphragm	Non-relieving Diaphragm	Repair Kit Self-relieving	Repair Kit Non-relieving	Valve Assembly Kit
R03	—	—	—	—	PS423	PS422	PS424B
R16	—	—	RRP-96-213	RRP-96-216	RRP-95-130	RRP-95-129	RRP-96-215
R21	—	—	—	—	RRP-95-151	—	—
R26	—	—	RRP-96-238	RRP-96-332	RRP-95-951	RRP-95-950	RRP-96-294
R30	—	RRP-95-451	—	—	—	—	RRP-95-159
R31	RRP-95-192	—	—	—	RRP-95-152	—	RRP-96-935
R40	—	RRP-95-451	—	—	RRP-95-161	RRP-95-162	—
R41	RRP-95-192	—	—	—	—	—	RRP-96-935

Model	Self-relieving Diaphragm	Non-relieving Diaphragm	Repair Kit Self-relieving	Repair Kit Non-relieving	Valve Assembly Kit	Fluorocarbon Diaphragm Self-relieving	Fluorocarbon Valve Assembly
Precision Regulator P15 / P16	PRP-95-960	—	PRP-95-004	PRP-95-053	PRP-95-959	PRP-95-073	PPA-95-067

	Pressure Spring 0-15 PSIG	Pressure Spring 0-30 PSIG	Pressure Spring 0-40 PSIG	Pressure Spring 0-50 PSIG	Pressure Spring 0-60 PSIG	Pressure Spring 0-125 PSIG	Pressure Spring 0-160 PSIG	Pressure Spring 0-180 PSIG	Pressure Spring 0-250 PSIG
R16	—	—	—	RRP-95-222	—	RRP-95-224	—	—	RRP-95-218
R21	—	—	RRP-95-906	—	—	—	RRP-95-905	—	—
R26	—	—	—	—	RRP-95-962	GRP-95-225	—	—	RRP-95-219
R30	—	—	—	—	—	RRP-95-226	—	RRP-95-220	—
R31	—	—	RRP-95-906	—	—	—	RRP-95-905	—	—
R40	—	—	—	—	—	RRP-95-226	—	RRP-95-220	—
R41	—	—	RRP-95-906	—	—	—	RRP-95-905	—	—
P15 / P16	RRP-95-233	RRP-95-916	—	RRP-95-222	—	RRP-95-224	—	—	—



# Lubricator Replacement Bowl Kits



Model	Manual Drain Kit	Plastic Bowl No Drain Port	Plastic Bowl / Bowl Guard Manual Drain	Plastic Bowl Petcock Drain	Metal Bowl / Sight Gauge Manual Drain
L03	—	PS421	—	—	—
L16	—	LRP-96-937	—	LRP-96-543	GRP-95-133
L08	—	—	LRP-96-736	—	GRP-96-714*
L17	—	LRP-96-937	—	LRP-96-543	GRP-95-133
L18	GRP-96-685	—	LRP-96-701	—	GRP-96-636
L26	—	LRP-95-938	LRP-95-967	LRP-95-958	GRP-95-931
L27	—	LRP-95-938	LRP-95-967	LRP-95-958	GRP-95-931
L28	GRP-96-685	—	LRP-96-702	—	GRP-96-644
L30	—	LRP-96-940	LRP-95-830	LRP-96-160	GRP-95-676
L34	—	LRP-96-940	LRP-95-830	LRP-96-160	GRP-95-676
L39	PS512	—	—	—	P3NKA00BSM
L40	—	LRP-96-940	LRP-95-830	LRP-96-160	GRP-95-676
L50	—	LRP-96-940	LRP-95-830	LRP-96-160	GRP-95-676

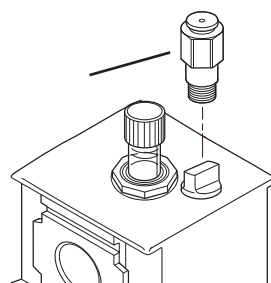
\*Metal bowl does not have sight gauge. \*\* No Drain.

D  
Accessories & Repair Kits

# Lubricator Replacement Kits

Model	Siphon Tube Assembly	Bowl O-ring (Nitrile)	Bowl O-ring (Fluorocarbon)	Force Fill Adapter	Fill Plug Kit (Fill Plug & O-ring)	Sight Dome Assembly
L08	LRP-96-731	GRP-96-710	GRP-96-711	—	LRP-96-730	LRP-96-301
L18	LRP-96-677	GRP-96-640	GRP-96-754	LRP-96-704	LRP-96-679	LRP-96-720
L28	LRP-96-781	GRP-96-654	GRP-96-755	LRP-96-704	LRP-96-679	LRP-96-720
L39	—	—	—	P3NKA00PK	P3NKA00PL	PS740

Suggested Lubricant  
 Airline Oil F442001  
 Petroleum based oil of 100 to 200 SUS viscosity at 100°F and an aniline point greater than 200°F (DO NOT USE OILS WITH ADDITIVES, COMPOUNDED OILS CONTAINING SOLVENTS, GRAPHITE, DETERGENTS, OR SYNTHETIC OILS.)



**Force Fill Adapter**  
 (Optional – Replaces Fill Plug)

# Accessories – Lubricators



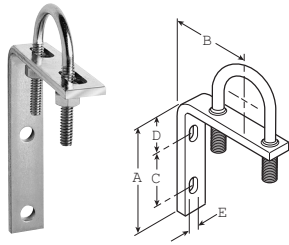
**F442 Oil**  
**F442001** - 1 Quart Bottle  
**F442002** - 1 Gallon  
**F442005** - 4 Gallon Case

Accessories	Part Number	Used On
Oil	F442001 – 1 Quart Bottle	
	F442002 – 1 Gallon	
	F442005 – 4 Gallon Case	

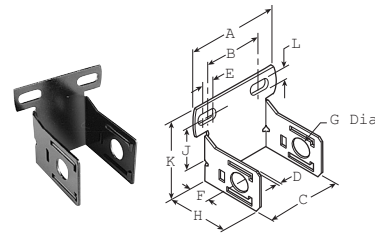
D

Accessories & Repair Kits

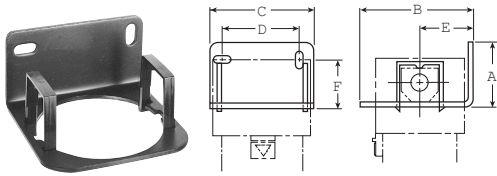
# Accessories – Lubricators



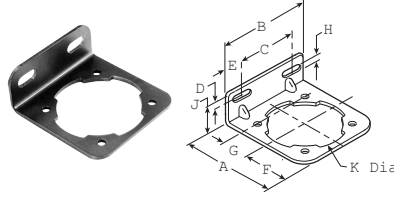
**Wall Mounting Bracket  
U-Bolt Pipe Clamp  
GRP-95-734**



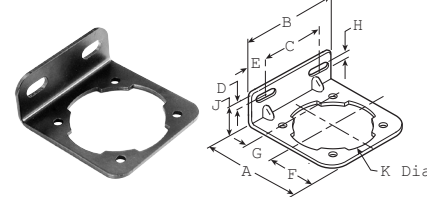
**C-Bracket  
GPA-97-010**



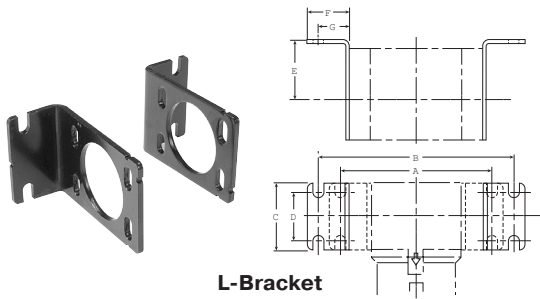
**L-Bracket  
GPA-95-016, GPA-95-946**



**L-Bracket  
GPA-96-604**

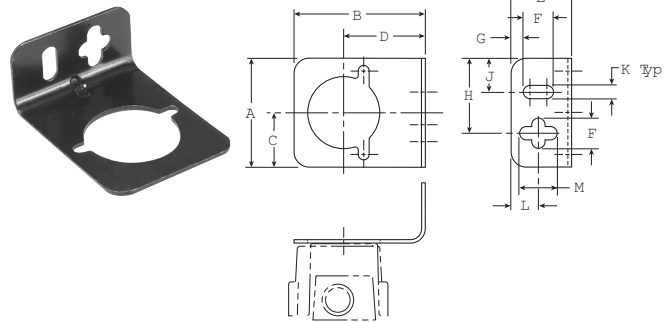


**L-Bracket  
GPA-96-605**



**L-Bracket  
P3NKA00MW**

For 1-1/2" BSPP Port Block with E02 fitting application, use **Mounting Bracket Kit P3NKA00BMW**



**L-Bracket  
PS419**

## Dimensions Inches (mm)

Accessories	Part Number	Used On	A	B	C	D	E	F	G	H	J	K	L	M
Wall Mounting Bracket	GRP-95-734	For All Non-Modular Units Up To 1" NPT	3.34 (85)	2.76 (70)	1.62 (41)	1.10 (28)	0.30 (7.6)	—	—	—	—	—	—	—
C-Bracket	GPA-97-010	L08	2.67 (68)	1.73 (44)	1.57 (40)	.07 (1.8)	.39 (9.9)	1.57 (40)	.78 (20)	2.32 (59)	1.37 (35)	2.41 (61)	.26 (6.6)	—
L-Bracket	GPA-95-016	L16 / L17	2.12 (53)	3.62 (91)	3.40 (83)	2.53 (64)	1.88 (47)	2.12 (54)	—	—	—	—	—	—
	GPA-95-946	L26 / L27	2.12 (53)	3.62 (91)	3.80 (96)	2.93 (74)	1.88 (47)	2.12 (54)	—	—	—	—	—	—
	GPA-96-604	L18	2.84 (72)	2.74 (69.5)	1.66 (42)	.38 (9.6)	.54 (14)	1.26 (32)	.88 (22)	.28 (7.1)	1.10 (28)	2.25 (57)	—	—
	GPA-96-605	L28	3.44 (87)	3.00 (76)	1.88 (48)	.38 (9.6)	.56 (14)	1.49 (38)	1.10 (28)	.28 (7.1)	1.10 (28)	2.66 (67.5)	—	—
	P3NKA00MW	L39	6.22 (158)	8.19 (208)	2.75 (70)	1.97 (50)	2.36 (60)	1.77 (45)	1.30 (33)	—	—	—	—	—
	PS419	L03	2.12 (53)	3.62 (91)	3.40 (83)	2.53 (64)	1.88 (47)	0.50 (13)	0.20 (5)	1.24 (31)	0.56 (14)	0.22 (6)	0.45 (11)	0.62 (16)

# Filter / Regulators Replacement Repair Kits



Model	Plastic Bowl / Bowl Guard Manual Drain	Metal Bowl / Sight Gauge Manual Drain	Plastic Bowl / Bowl Guard Automatic Drain	Metal Bowl / Sight Gauge Automatic Drain	Plastic Bowl / Bowl Guard Closed Bottom
<b>B08</b>	GRP-96-712	GRP-96-714*	—	—	—
<b>B18</b>	GRP-96-634	GRP-96-636	GRP-96-635	GRP-96-637	GRP-96-638
<b>B28</b>	GRP-96-642	GRP-96-644	GRP-96-643	GRP-96-645	GRP-96-652
<b>B39</b>	—	P3NKA00BSM	—	P3NKA00BSA	—

\* Metal bowl does not have sight gauge.

\*\* 12 Series has Piston Style Drain.

Model	Filter Element 5 Micron	Bowl O-ring (Nitrile)	Bowl O-ring (Fluorocarbon)	Filter Retainer Element Baffle	Manual Drain
<b>B08</b>	FRP-96-729	GRP-96-710	GRP-96-711	—	—
<b>B18</b>	FRP-96-639	GRP-96-640	—	FRP-96-641	GRP-96-685
<b>B28</b>	FRP-96-653	GRP-96-654	GRP-96-755	FRP-96-283	GRP-96-685
<b>B39</b>	P3NKA00ESE	—	—	—	PS512

Model	Self-relieving Diaphragm (Nitrile)	Non-relieving Diaphragm (Nitrile)	Valve Assembly Kit	Valve Spring	Service Kit (Relieving)
<b>B08</b>	GRP-96-725	GRP-96-726	—	RRP-96-728	—
<b>B18</b>	RRP-96-656	RRP-96-657	RRP-96-658	—	—
<b>B28</b>	RRP-96-986	RRP-96-987	RRP-96-049	—	—

Model	Main Regulating Spring 0-30 PSIG	Main Regulating Spring 0-60 PSIG	Main Regulating Spring 0-125 PSIG	Main Regulating Spring 0-250 PSIG
<b>B08</b>	GRP-95-111	GRP-96-718	GRP-96-717	—
<b>B18</b>	RRP-96-659	RRP-96-660	RRP-96-661	RRP-96-662
<b>B28</b>	RRP-96-163	RRP-96-164	RRP-96-165	RRP-96-166
<b>B39</b>	—	C10A1304	CA101308	CA101317

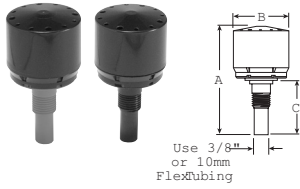
  

Tamper Resistant Model	Aluminum Resistant Ring	Plastic Panel Nut	Manual Panel Nut
<b>B08</b>	—	RPA-96-733	RPA-96-734
<b>B18</b>	—	RRP-96-673	RRP-96-675
<b>B28</b>	RRP-96-672	RRP-96-674	RRP-96-676

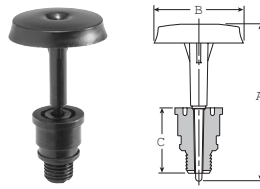
D

Accessories & Repair Kits

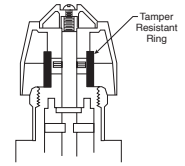
# Accessories Filter / Regulators



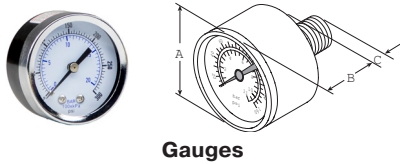
**Automatic Drain**  
GRP-95-973, GRP-95-981



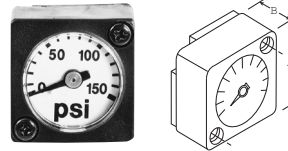
**Piston Drain**  
GRP-96-716



**Tamper Resistant Kit**  
RPA-95-006



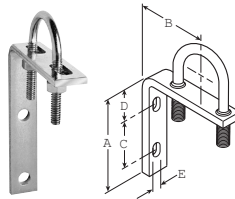
**Gauges**



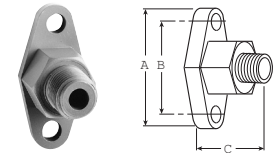
**Flush Mount Gauge**  
08 Series



**Digital Gauge**



**Wall Mounting Bracket**  
**U-Bolt Pipe Clamp**  
GRP-95-734



**Wall Mounting Bracket**  
—  
**Gauge Port Adapter**  
RRP-95-590

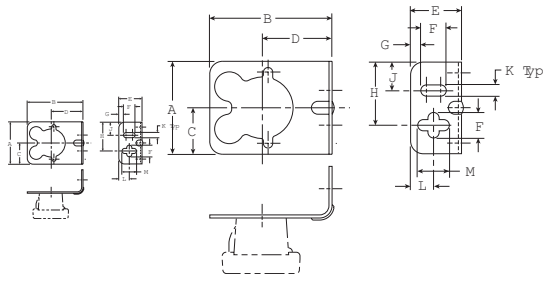
## Dimensions Inches (mm)

Accessories	Part Number	Used On	A	B	C	D	E
Automatic Drains, Nitrile	GRP-95-973	B18, B28, CB6	2.93 (74.4)	1.47 (37.3)	1.17 (29.7)	—	—
Automatic Drains, Fluorocarbon	GRP-95-981	B18, B28, CB6					
Piston Drain	GRP-96-716	B08	1.70 (43)	.94 (24)	.68 (17)	—	—
Gauges, 1/8 Port, CBM	K4515N18030 (0 to 30 PSIG)	B03	1.64 (41.6)	1.09 (27.6)	.80 (20)	—	—
	K4515N18060 (0 to 60 PSIG)	B03, BB3, BA3					
	K4515N18160 (0 to 160 PSIG)						
Gauges, 1/4 Port, CBM	K4520N14030W (0 to 30 PSIG)	PC5, PC6	1.96 (49.8)	1.08 (27)	.91 (23)	—	—
	K4520N14060W (0 to 60 PSIG)	CB6, PC5, PC6					
	K4520N14160W (0 to 160 PSIG)						
	K4520N14300W (0 to 300 PSIG)						
Gauges, 5mm 2" Round 1/4 Center Back Mount	K4520N14030 (0 to 30 PSIG)	B18, B28	1.67 (50)	.94 (24)	.71 (18)	—	—
	K4520N14060 (0 to 60 PSIG)						
	K4520N14160 (0 to 300 PSIG)						
	K4520N14300 (0 to 20 bar)						
Flush Mount Series Gauges	K4511SCR150 (0 to 150 PSIG)	B08	1.06 (26.9)	.63 (16)	—	—	—
	K4511SCR060 (0 to 60 PSIG)						
	K4511SCR11B (0 to 11 bar)						
Round Digital Gauge, 1/4 Port	K4517N14160D (0 to 160 PSIG)	B18, B28	1-3/4" Diameter				
Tamper Resistant Kit	RPA-95-006	CB6, PC5, PC6	—	—	—	—	—
Wall Mtg. Bracket U-Bolt Pipe Clamp	GRP-95-734	For All Non-Modular Units Up to 1" NPT	3.34 (85)	2.76 (70)	1.62 (41)	1.10 (28)	0.30 (7.6)
Wall Mtg. Bracket Gauge Port Adapter	RRP-95-590	CB6, PC5, PC6	1.87 (47.5)	1.36 (34.5)	1.06 (27)	—	—

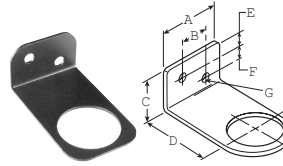
**D**

Accessories & Repair Kits

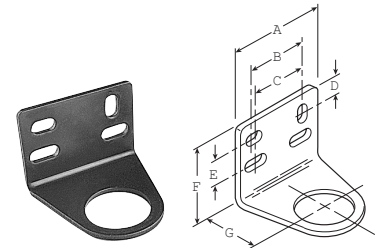
# Accessories – Filter / Regulators



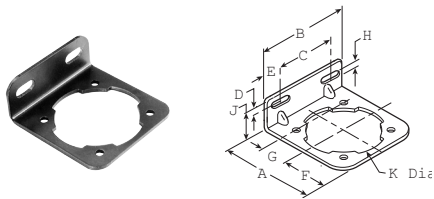
**L-Bracket  
PS417B  
(Includes Panel Mount Nut)**



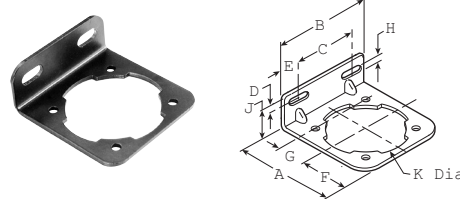
**L-Bracket  
GRP-95-147**



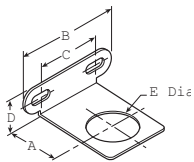
**L-Bracket  
GPA-95-011, GPA-95-012**



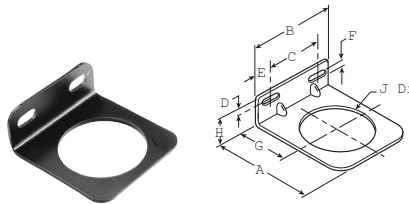
**Body L-Bracket  
GPA-96-604**



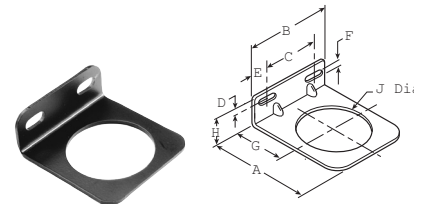
**Body L-Bracket  
GPA-96-605**



**L-Bracket  
GRP-96-739**



**Bonnet L-Bracket  
GPA-96-606**

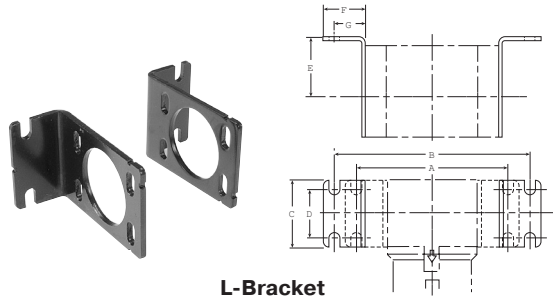


**Bonnet L-Bracket  
GPA-96-607**

D

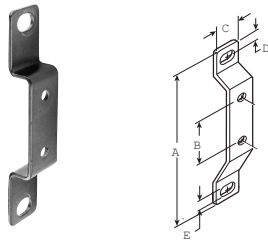
Accessories & Repair Kits

# Accessories – Filter / Regulators

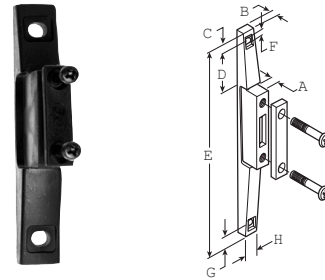


**L-Bracket  
P3NKA00MW**

For 1-1/2" BSPP Port Block with E02 fitting application, use **Mounting Bracket Kit P3NKA0BMW**



**T-Bracket  
GPA-96-602**

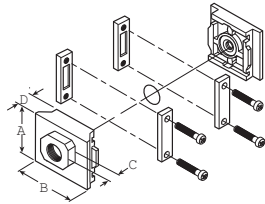


**T-Bracket  
GPA-96-737  
w/ Joiner**

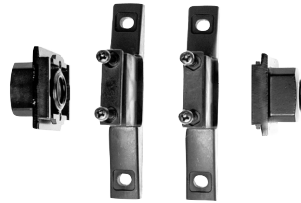
## Dimensions Inches (mm)

Accessories	Part Number	Used On	A	B	C	D	E	F	G	H	J	K	L	M
L-Bracket with Plastic Panel Nut	GPA-95-011	CB6, PC5, PC6	2.50 (63.5)	1.60 (41)	1.50 (38)	0.46 (12)	0.62 (16)	1.88 (48)	1.62 (41)	—	—	—	—	—
	GRP-95-747	BB3, BA3	1.50 (38)	0.68 (17)	1.00 (25)	1.75 (44)	0.34 (8.6)	0.31 (7.9)	0.22 (5.6)	—	—	—	—	—
L-Bracket	GPA-95-012	CB6, PC5, PC6	2.50 (63.5)	1.60 (41)	1.50 (38)	0.46 (12)	0.62 (16)	1.88 (48)	1.62 (41)	—	—	—	—	—
	GRP-95-147	BB3, BA3	1.50 (38)	0.68 (17)	1.00 (25)	1.75 (44)	0.34 (8.6)	0.31 (7.9)	0.22 (5.6)	—	—	—	—	—
	GPA-96-606	B18	2.74 (69.5)	2.74 (69.5)	1.66 (42)	.43 (11)	.54 (14)	.28 (7.1)	1.57 (40)	1.00 (25)	2.0 (51)	—	—	—
	GPA-96-607	B28	3.33 (84.5)	3.00 (76)	1.88 (48)	.43 (11)	.56 (14)	2.40 (61)	1.94 (49)	1.00 (25)	2.40 (61)	—	—	—
	GRP-96-739	B08	1.57 (40)	2.68 (68)	1.74 (44)	.97 (25)	1.19 (30)	—	—	—	—	—	—	—
	P3NKA00MW	L39	6.22 (158)	8.19 (208)	2.75 (70)	1.97 (50)	2.36 (60)	1.77 (45)	1.30 (33)	—	—	—	—	—
	PS417B	B03	2.12 (53)	3.62 (91)	3.40 (83)	2.53 (64)	1.88 (47)	0.50 (13)	0.20 (5)	1.24 (31)	0.56 (14)	0.22 (6)	0.45 (11)	0.62 (16)
C-Bracket	GPA-96-604	B18	2.84 (72)	2.74 (69.5)	1.66 (42)	.38 (9.6)	.54 (14)	1.26 (32)	.88 (22)	.28 (7.1)	1.10 (28)	2.25 (57)	—	—
	GPA-96-605	B28	3.44 (87)	3.00 (76)	1.88 (48)	.38 (9.6)	.56 (14)	1.49 (38)	1.10 (28)	.28 (7.1)	1.10 (28)	2.66 (67.5)	—	—
	GPA-97-010	B08	2.67 (68)	1.73 (44)	1.57 (40)	.07 (1.8)	.39 (9.9)	1.57 (40)	.78 (20)	2.32 (59)	1.37 (35)	2.41 (61)	.26 (6.6)	—
T-Bracket	GPA-96-602	B18, B28	3.75 (95)	1.00 (25.4)	.76 (19.3)	.25 (6.3)	.28 (7.1)	—	—	—	—	—	—	—
T-Bracket w/ Joiner	GPA-96-737	B08	.45 (11)	.28 (7.1)	.40 (10)	.67 (17)	3.97 (100.8)	.22 (5.6)	.40 (10)	.64 (16)	—	—	—	—

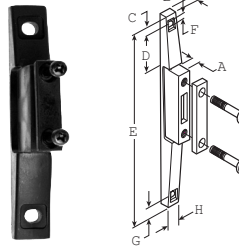
# Modular Accessories – 08 Series



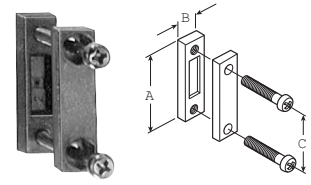
**End Block Set**



**End Block Set  
w/ T-Bracket**



**T-Bracket  
GPA-96-737  
w/ Joiner**



**Joiner Set  
GPA-96-738  
(O-ring not shown)**

## Dimensions Inches (mm)

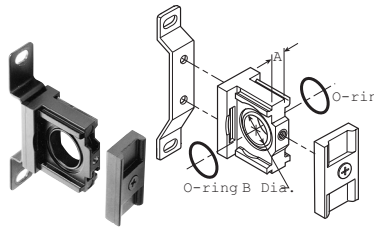
Accessories	Part Number	Pipe Size	A	B	C	D	E	F	G	H	J	K
<b>T-Bracket Joiner Set</b>	<b>GPA-96-737</b>	—	.45 (11)	.28 (7.1)	.40 (10)	.67 (17)	3.97 (100.8)	.22 (5.6)	.40 (10)	.64 (16)	—	—
<b>Joiner Set</b>	<b>GPA-96-738</b>	—	1.42 (36)	.39 (9.9)	.98 (26)	—	—	—	—	—	—	—
<b>End Block Set</b>	<b>GPA-97-018</b>	1/8 NPT	1.42 (36)	1.57 (40)	.53 (13.5)	.31 (8)	—	—	—	—	—	—
	<b>GPA-97-019</b>	1/4 NPT										
	<b>GPA-97-020</b>	3/8 NPT										
	<b>GPA-97-066</b>	G 1/8										
	<b>GPA-97-067</b>	G 1/4										
<b>GPA-97-065</b>	G 3/8											
<b>End Block Set With T-Brackets</b>	<b>GPA-97-025</b>	1/8 NPT	1.42 (36)	1.57 (40)	.53 (13.5)	.31 (8)	—	—	—	—	—	—
	<b>GPA-97-026</b>	1/4 NPT										
	<b>GPA-97-027</b>	3/8 NPT										
	<b>GPA-97-068</b>	G 1/8										
	<b>GPA-97-069</b>	G 1/4										
	<b>GPA-97-070</b>	G 3/8										

**D**

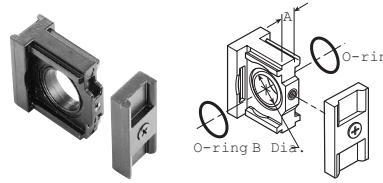
Accessories & Repair Kits



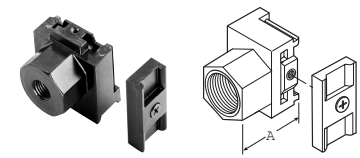
# Modular Accessories – 18 / 28 Series



**T-Bracket w/ Joiner Set GPA-96-603**



**Joiner Set GPA-96-601**



**End Block**

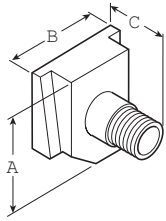
**Dimensions** Inches (mm)

Accessories	Part Number	Pipe Size	A	B	C	D	E	F	G	H	J	K
T-Bracket w/ Joiner Set	GPA-96-603	—	.35 (8.9)	.87 (22.1)	—	—	—	—	—	—	—	—
Joiner Set	GPA-96-601	—	.35 (8.9)	.87 (22.1)	—	—	—	—	—	—	—	—
End Block	GPA-96-610	1/4 NPT	1.59 (40)	—	—	—	—	—	—	—	—	—
	GPA-96-611	3/8 NPT										
	GPA-96-612	1/2 NPT										
	GPA-96-613	3/4 NPT										
	GPA-96-620	G 1/4										
	GPA-96-621	G 3/8										
	GPA-96-622	G 1/2										
GPA-96-623	G 3/4											

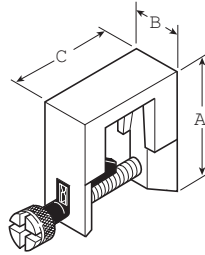
**D**

Accessories & Repair Kits

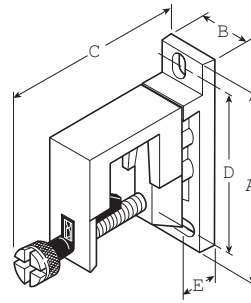
# Modular Accessories – 16 / 26 Series



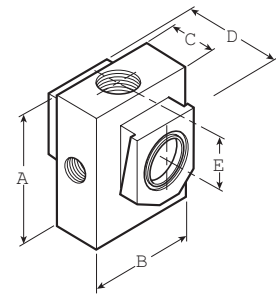
**Modular Pipe Adapter**  
GPA-95-035,  
GPA-95-036,  
GPA-95-037



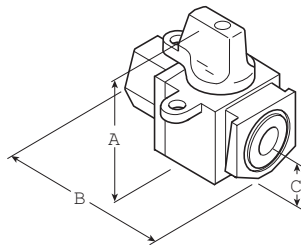
**Modular Sleeve**  
GPA-95-292



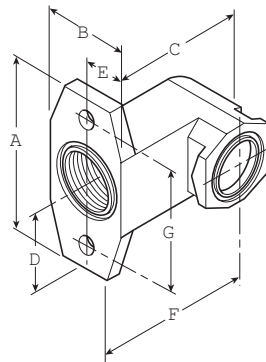
**Modular Sleeve with T-Bracket**  
GPA-95-969



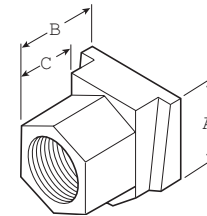
**Modular Manifold Block  
(3 Auxiliary Ports)**  
GPA-95-919



**Modular 3-Way Shut-off Valve**  
GPA-95-096,  
GPA-95-097,  
GPA-95-098



**Right-Angle Bracket**  
GPA-95-042



**Modular Connecting  
End Block Set**  
GPA-95-223, -224,  
-225, -320, -321








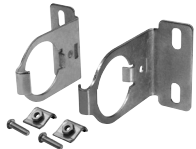
D

Accessories & Repair Kits

## Dimensions Inches (mm)

Accessories	Part Number	Pipe Size NPT	A	B	C	D	E	F	G
Modular Pipe Adapter	GPA-95-035	1/4	1.25	1.25	1.14	—	—	—	—
	GPA-95-036	3/8	(31.7)	(31.7)	(28.9)	—	—	—	—
	GPA-95-037	1/2	—	—	—	—	—	—	—
Modular Sleeve	GPA-95-292	—	2.15 (54.6)	0.82 (20.8)	1.92 (48.8)	—	—	—	—
Modular Sleeve With T-Bracket	GPA-95-969	—	3.60 (91.4)	.82 (20.8)	3.43 (87.1)	2.98 (75.7)	0.78 (19.8)	—	—
Modular Manifold Block (3 Auxiliary Ports)	GPA-95-919	1/4	2.30 (58.4)	2.00 (50.8)	0.72 (18.3)	1.57 (39.9)	0.98 (24.9)	—	—
Modular 3-Way Shut-off Valve	GPA-95-096	1/4	2.38	2.51	0.69	—	—	—	—
	GPA-95-097	3/8	(60.4)	(63.7)	(17.5)	—	—	—	—
	GPA-95-098	1/2	—	—	—	—	—	—	—
Modular Right Angle Bracket	GPA-95-042	—	2.75 (69.8)	1.25 (31.7)	2.38 (60.4)	1.00 (25.4)	0.63 (16.0)	1.75 (44.5)	2.00 (50.8)
Modular Connecting End Block Set	GPA-95-223	1/4	1.25	1.19	0.75	—	—	—	—
	GPA-95-224	3/8	(31.7)	(30.2)	(19.0)	—	—	—	—
	GPA-95-225	1/2	—	—	—	—	—	—	—
	GPA-95-320	3/4	—	—	—	—	—	—	—
	GPA-95-321	1	—	—	—	—	—	—	—

## Modular Accessories – 90 Series

Description	Connection	Weight kg (lb)	Part number		
0.01 micron element kit			<b>P3YKA00ESC</b>		
5 micron element kit			<b>P3YKA00ESE</b>		
Adsorber element kit			<b>P3YKA00ESA</b>		
Angle bracket + metal lock ring			<b>P3YKA00MS</b>		
Bowl kit with combined manual / semi-auto drain			<b>P3YKA00BSC</b>		
Bowl kit with auto drain			<b>P3YKA00BSA</b>		
Bowl kit			<b>P3YKA00BSN</b>		
Connector o-ring kit	Qty: 5		<b>P3YKA08CY</b>		
Differential pressure indicator kit			<b>P3YKA00RQ</b>		
Diaphragm kit (relieving type)			<b>P3YKA00RR</b>		
Diaphragm kit (non-relieving type)			<b>P3YKA00RN</b>		
Key lock (replacement)			<b>P3XKA00AS</b>		
Lubricator oil	F442001 - 1 Qt.	0.92 (2.03)	<b>F442001</b>		
	F442002 - 1 Gal		<b>F442002</b>		
Neck mounting bracket kit		3.75 (8.27)	<b>P3YKA00MS</b>		
P3Y connecting kit		0.05 (0.11)	<b>P3YKA00CB</b>		
Panel mounting nut (Aluminum)		0.70 (1.54)	<b>P3YKA00MM</b>		
Pressure gauge	0 to 10 bar (0 to 160 psig)	1/4"	0.06 (0.13)	<b>K4520N14160</b>	
	0 to 20 bar (0 to 300 psig)	1/4"	0.06 (0.13)	<b>K4520N14300</b>	
Refill plug			<b>P3YKA00PL</b>		
Wall mounting brackets		0.2 (0.44)	<b>P3YKA00CW</b>		

D

Accessories &amp; Repair Kits

# Notes

**D**

Accessories & Repair Kits